

Cod. D433181

Matt Black

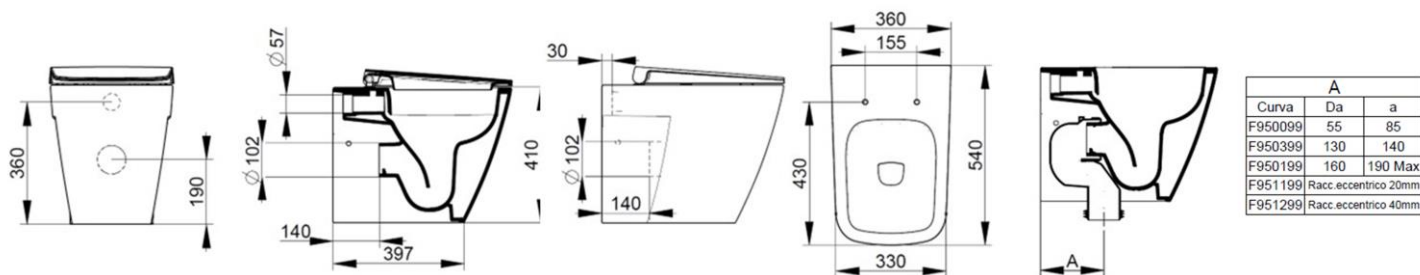
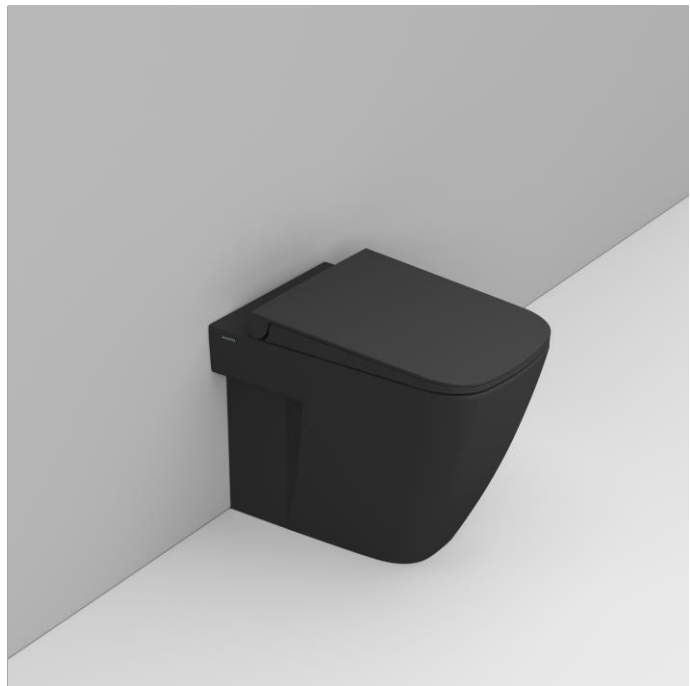
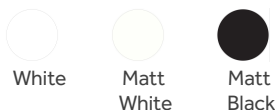
DOP-No 997

Back to wall bowl with 4,5 L universal outlet, due to rimless system and interior surface design. Supplied with fixation set for hidden attachment. To be completed with seat and cover and outlet bend in case of vertical installation.

Width (mm)	360
Depth (mm)	540
Height (mm)	410
Weight (Kg)	28,50
Flush Volume (l)	4,5
Installation	back to wall
Outlet	universal outlet



available colours:



SEAT and COVER (NOT INCLUDE)



S433381

Soft closing seat and cover with metal hinges and quick take-off

PROVIDED FIXINGS / ACCESSORIES



F953299

Fixation set for hidden BTW installation

NOT PROVIDED FIXINGS / ACCESSORIES / SPARE PARTS

(\* Mandatory)



VS364CR

Hinges for Mia soft closing seat and cover.



F950399

Plastic 'S' outlet bend 90°



F950099

Plastic outlet bend 90°



F950199

Plastic outlet bend 90°, to be installed only on shifted BTW bowl



F951299

Eccentric adapter for outlet +/- 40mm.



### F951199

Eccentric adapter for outlet +/- 20mm.



### VS52701

Buffers kit for Mia/Mirto/Gemma2 seat and cover