

Cod. D433281

Matt Black

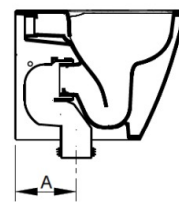
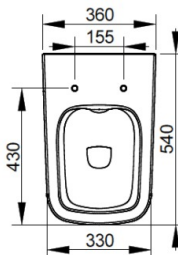
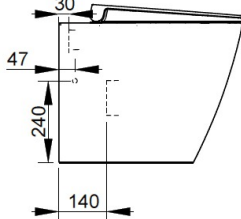
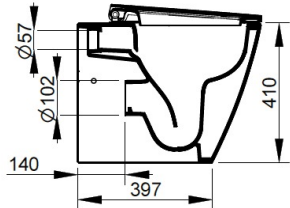
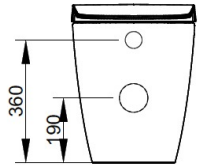
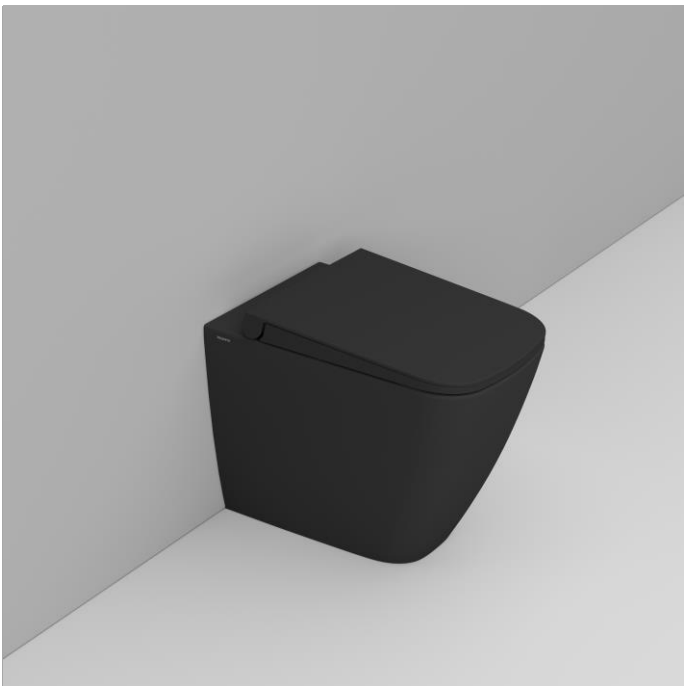
DOP-No 997

Back to wall bowl with 4,5 L universal outlet, due to rimless system and interior surface design. Supplied with fixation set for hidden attachment. To be completed with seat and cover and outlet bend in case of vertical installation.

Width (mm)	360
Depth (mm)	540
Height (mm)	410
Weight (Kg)	28,50
Flush Volume (l)	4,5
Installation	back to wall
Outlet	universal outlet



available colours:



	A	
Curva	Da	a
F950099	55	85
F950399	130	140
F950199	160	190 Max
F951199	Racc.eccentrico 20mm	
F951299	Racc.eccentrico 40mm	

SEAT and COVER (NOT INCLU



S433381

Soft closing seat and cover with metal hinges and quick take-off

PROVIDED FIXINGS / ACCESSORIES



F953299

Fixation set for hidden BTW installation

NOT PROVIDED FIXINGS / ACCESSORIES / SPARE

(* Mandatory)



VS364CR

Hinges for Mia soft closing seat and cover.



F950399

Plastic 'S' outlet bend 90°



F950099

Plastic outlet bend 90°



F950199

Plastic outlet bend 90°, to be installed only on shifted BTW bowl



F951299

Eccentric adapter for outlet +/- 40mm.



F951199
Eccentric adapter for
outlet +/- 20mm.



VS52701
Buffers kit for
Mia/Mirto/Gemma2 seat
and cover